

*Elevation E*  
(Shown w/ Optional 2-Car Garage & Bonus Room)

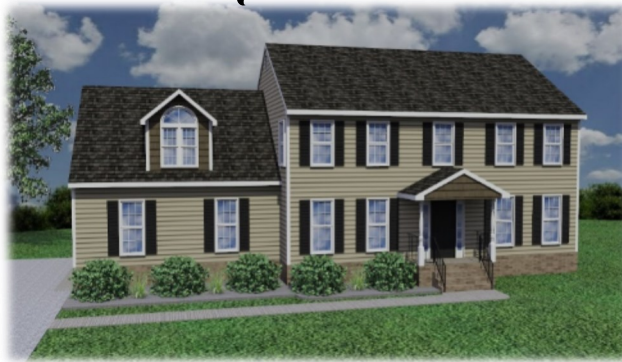
[LibertyHomesVA.com](http://LibertyHomesVA.com)

*The Davis*

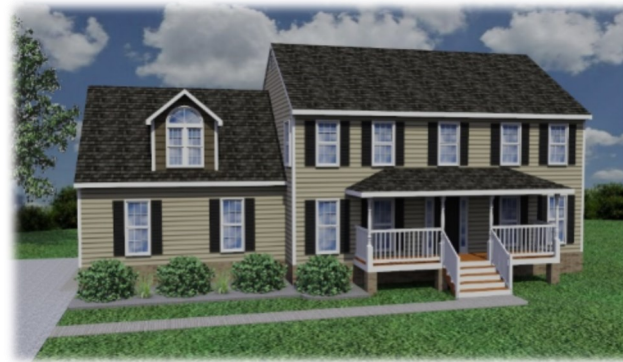
Renderings and Plans are for marketing purposes only and are shown with additional options including siding. This information is deemed accurate, but cannot be guaranteed. Builder reserves the right to make changes at any time.



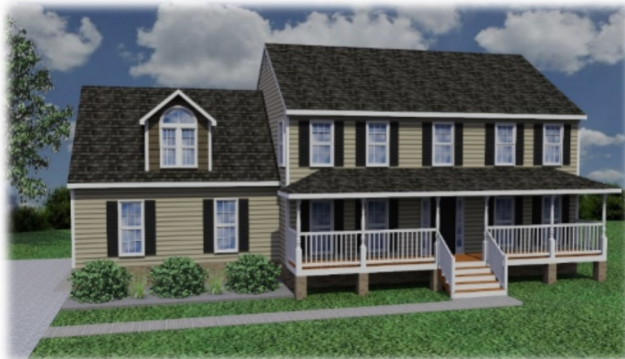
# The Davis Optional Elevations



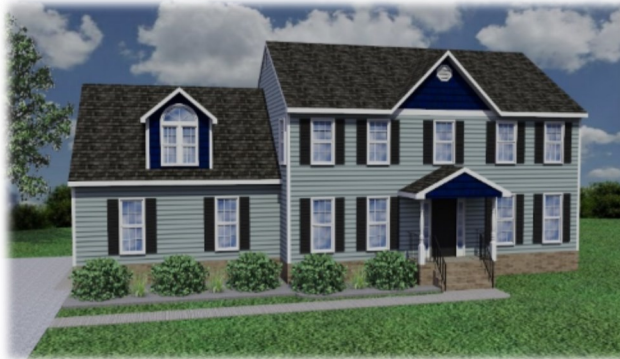
*Elevation A*



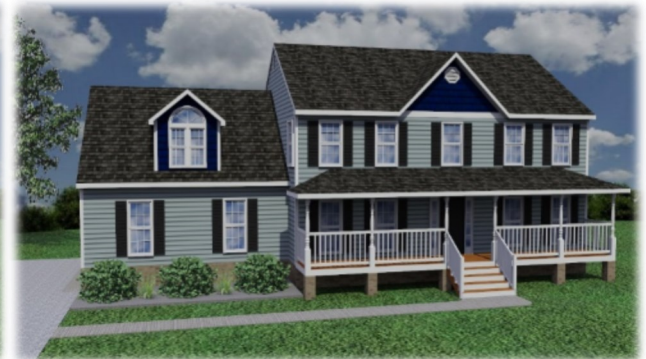
*Elevation B*



*Elevation C*



*Elevation D*



*Elevation F*

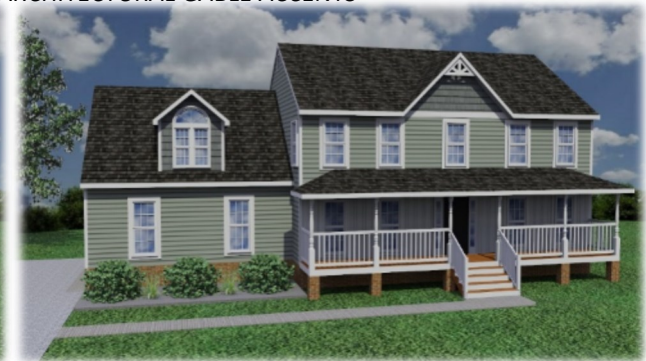
ADDITIONAL ELEVATIONS SHOWN W/ SHAKE, BOARD AND BATTEN, AND/OR ARCHITECTURAL GABLE ACCENTS



*Elevation A*



*Elevation D*

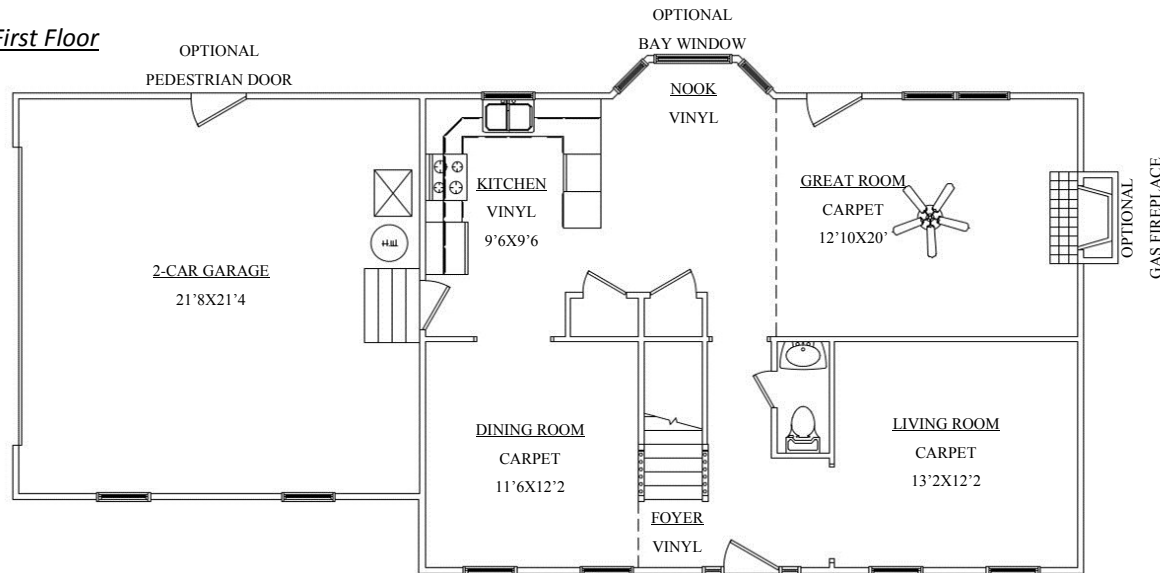


*Elevation F*

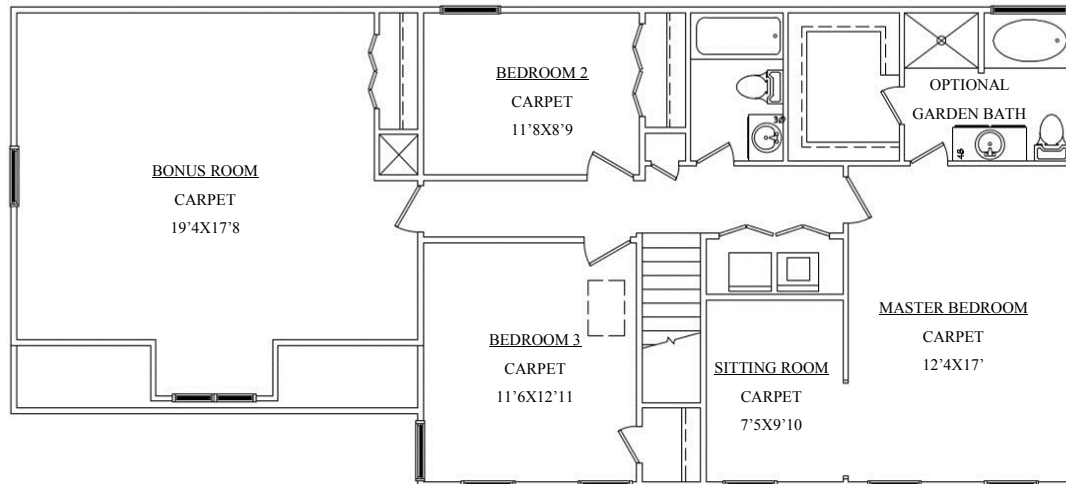
Renderings and Plans are for marketing purposes only and are shown with additional options including siding. This information is deemed accurate, but cannot be guaranteed. Builder reserves the right to make changes at any time.

# The Davis Floor Plan

## First Floor



## Second Floor



Liberty Homes, Inc.  
8249 Crown Colony Parkway  
Mechanicsville, VA 23116

Phone: (804) 730-7770  
[LibertyHomesVA.com](http://LibertyHomesVA.com)




---

2295 Finished Square Feet  
3BR/2.5BA  
Optional Garden Bath  
Shown w/ Optional 2-Car Garage  
& Bonus Room

Renderings and Plans are for marketing purposes only and are shown with additional options including siding. This information is deemed accurate, but cannot be guaranteed. Builder reserves the right to make changes at any time.